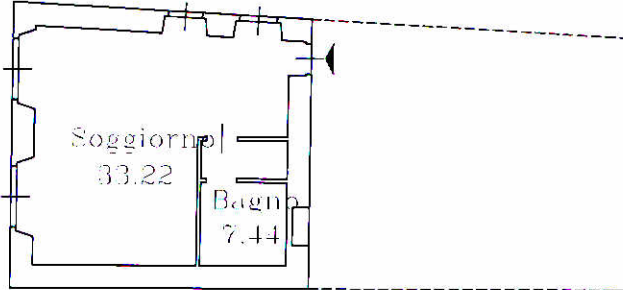


APPARTAMENTO
Subalterno 6



PIANO TERRA
H=280

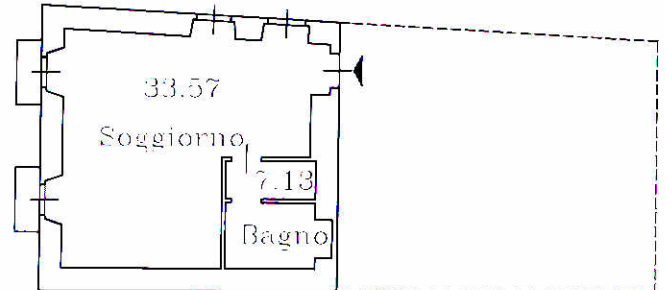


Superficie commerciale = 58 mq.

APPARTAMENTO
Subalterno 7



PRIMO PIANO
H=270

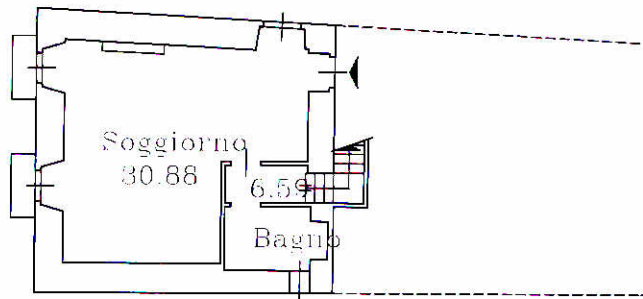


Superficie commerciale = 58 mq.

APPARTAMENTO
Subalterno 8

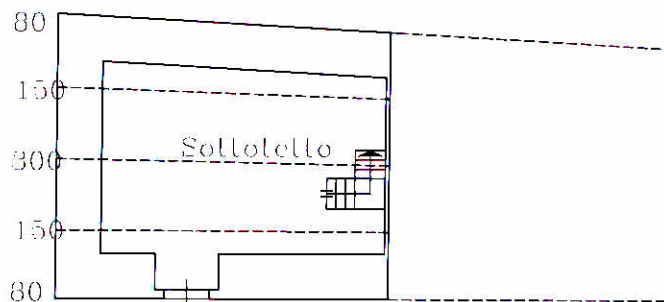


SECONDO PIANO
H=270



Superficie commerciale = 58 + 65 = 123 mq.

TERZO PIANO
Hmed=190



NORD

